



Bradford Teaching Hospitals 
NHS Foundation Trust



Evaluation of a new outcome measure LUNS (Longer-term Unmet Needs after Stroke)

LUNS is a 22-item self-completion postal outcome measure that addresses patients' social, emotional, physical, medical, and information needs.

The LUNS study is a multi-centre study, recruiting up to 950 patients in 2 phases, to test reliability, validity, internal consistency and acceptability of the questionnaire.

Please see overleaf for protocol.

Further information on the study is available from the LUNS Study team :

01274 383405
lunsadmin@bradfordhospitals.nhs.uk

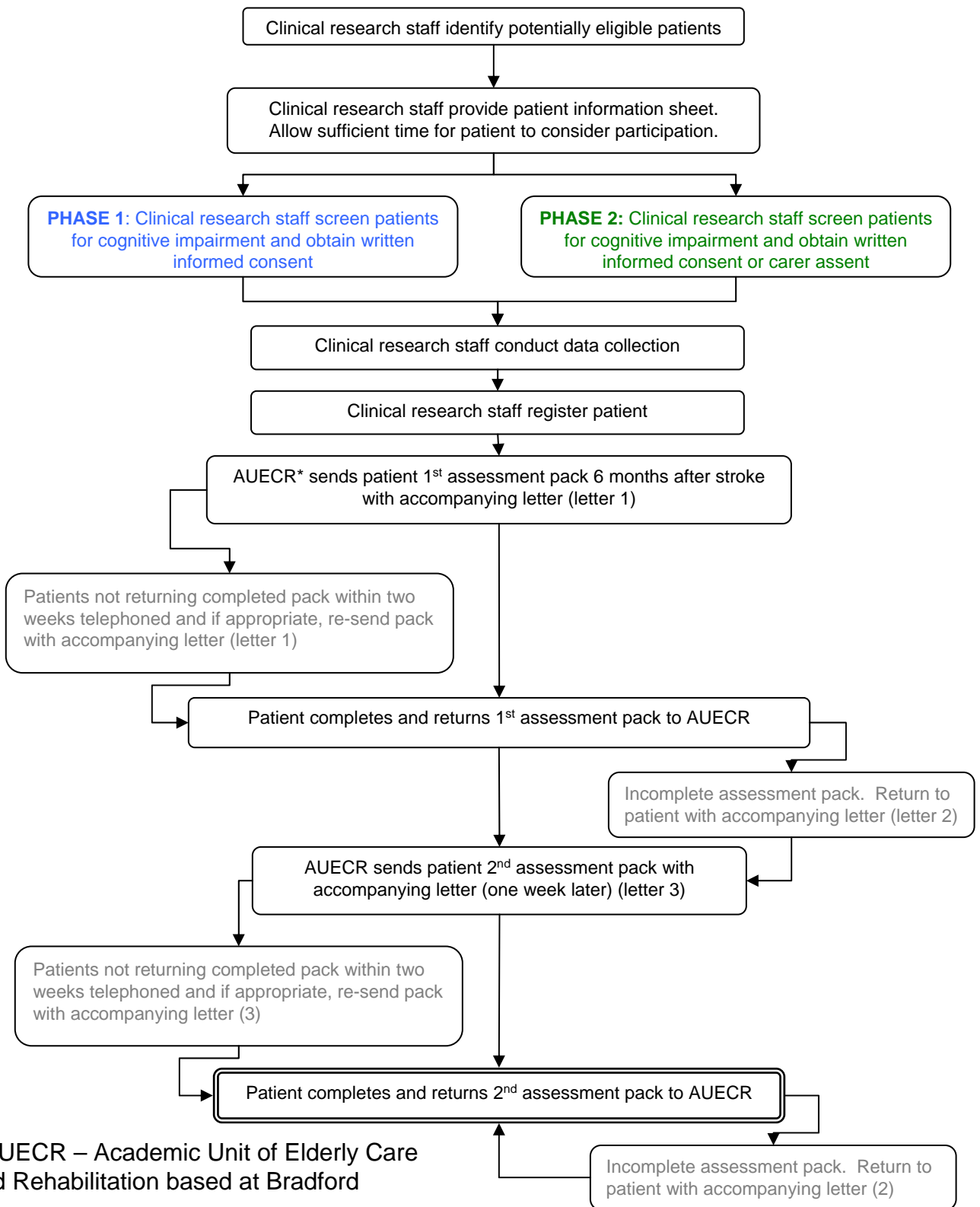


Funded by a NIHR Programme Grant for Applied Research



UNIVERSITY OF LEEDS

Protocol for LUNS study



* AUECR – Academic Unit of Elderly Care and Rehabilitation based at Bradford